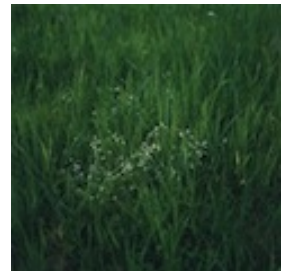
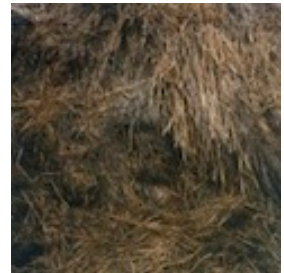


L. PARKER STEPHENSON
PHOTOGRAPHS

AIPAD **The Photography Show**

April 14 – 17, 2016

1. **SCHWALBE, Anne** (b. 1974)
See (Lake), 2008
Type C print – analog
Edition of 5 + 2 APs
Print size: 27 3/8 x 24 1/2 inches
Image size: 21 5/8 x 21 5/8 inches
Signed, titled, dated and editioned in pencil on print verso.
(P2390SCH)
2. **SCHWALBE, Anne** (b. 1974)
Holzwand (Wooden Wall), 2007
Type C print – analog
Edition of 7 + 2 APs
Print size: 12 x 9 1/2 inches
Image size: 8 3/8 x 8 3/8 inches
Signed, titled, dated and editioned in pencil on print verso
(P2434SCH)
3. **SCHWALBE, Anne** (b. 1974)
Midden (Mist), 2009
Type C print – analog
Edition of 7 + 2 APs
Print size: 12 x 9 3/8 inches
Image size: 8 3/8 x 8 3/8 inches
Signed, titled, dated and editioned in pencil on print verso
(P2432SCH)
4. **SCHWALBE, Anne** (b. 1974)
Wiese XLVIII (Meadow XLVIII), 2011
Type C print – analog
Edition of 7 + 2 APs
Print size: 12 x 9 3/8 inches
Image size: 8 3/8 x 8 3/8 inches
Signed, titled, dated and editioned in pencil on print verso
(P2430SCH)



5. **SCHWALBE, Anne** (b. 1974)
Im Haus (Inside the House), 2007
Type C print – analog
Edition of 7 + 2 APs
Print size: 12 x 9 3/8 inches
Image size: 8 3/8 x 8 3/8 inches
Signed, titled, dated and editioned in pencil on print verso.
(P2400SCH)



6. **KAWADA, Kikuji** (b. 1933)
Breathing Ad, (Objects, from Last Things series), 2014
Digital pigment print, printed by the artist 2016
Edition of 5
Print size: 23 1/2 x 16 1/2 inches
Image size: 21 1/4 x 14 1/8 inches
Blind stamp on print recto; signed, titled,
dated and editioned in pencil on print verso.
(P2614KK)



7. **KAWADA, Kikuji** (b. 1933)
Wild Weather, NHK TV, Traffic Sign, (from 2011-phenomena series),
2011
Digital pigment print, printed by the artist 2016
Edition of 5
Print size: 23 1/2 x 16 1/2 inches
Image size: 19 3/4 x 14 3/4 inches
Blind stamp print on print recto; signed, titled,
dated and editioned in pencil on print verso.
(P2604KK)



8. **KAWADA, Kikuji** (b. 1933)
Light in the Wind, (Exit Sun, from Last Things series), 2015
Digital pigment print, printed by the artist 2016
Edition of 5
Print size: 23 1/2 x 16 1/2 inches
Image size: 14 1/4 x 21 1/4 inches
Blind stamp print on print recto; signed, titled,
dated and editioned in pencil on print verso.
(P2613KK)



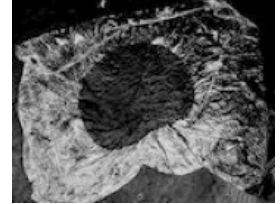
9. **KAWADA, Kikuji** (b. 1933)
Tokyo, Chaos Cloud, (from 2011-phenomena series), 2011
Digital pigment print, printed by the artist 2016
Edition of 5
Print size: 16 1/2 x 23 1/2 inches
Image size: 15 x 20 1/8 inches
Blind stamp on print recto; signed, titled,
dated and editioned in pencil on print verso.
(P2608KK)



10. **KAWADA, Kikuji** (b. 1933)
Coca Cola, (from The Map series), 1960-1965
Gelatin silver print, printed 1995
Print size: 18 x 22 inches
Image size: 13 x 17 ½ inches
Blind stamp on print recto; signed, titled,
and dated in pencil on print verso
(P2599KK)



11. **KAWADA, Kikuji** (b. 1933)
Japanese National Flag, Hinomaru, (from The Map series), 1960-1965
Gelatin silver print, printed 1995
Print size: 18 x 22 inches
Image size: 14 1/16 x 18 1/4 inches
Blind stamp on print recto; signed, titled,
and dated in pencil on print verso
(P2126KK)



12. **KAWADA, Kikuji** (b. 1933)
Special Attack Corps, (from The Map series), 1960-1965
Gelatin silver print, printed 1986
Print size: 20 x 16 inches
Image size: 14 1/16 x 18 1/4 inches
Blind stamp on print recto; signed, titled,
and dated in pencil on print verso.
(P2409KK)



13. **YOORS, Jan** (1922-1977)
Untitled (girl jumping rope on 14th Street), 1961
Gelatin silver print, printed 2014
Edition of 15
Print size: 14 x 11 inches
Image size: 12 ½ x 8 ¼ inches
Estate stamp on print verso; title, negative and print dates,
edition number and estate signature in pencil on print verso.
(P1757JY)



14. **YOORS, Jan** (1922-1977)
Untitled (Rocket Commander, 47th Street and Broadway, Times
Square), 1964
Gelatin silver print, printed 2012
Edition of 15
Print size: 14 x 11 inches
Image size: 12 ¼ x 8 ¼ inches
Estate stamp on print verso; title, negative and print dates,
edition number and estate signature in pencil on print verso.
(P0962JY)



15. **YOORS, Jan** (1922-1977)

Ruthy-Ann, Harlem, 1962

Gelatin silver print, printed 2012

Edition of 15

Print size: 11 x 14 inches

Image size: 8 x 12 ¼ inches

Estate stamp on print verso; title, negative and print dates, edition number and estate signature in pencil on print verso.
(P0967JY)



16. **YOORS, Jan** (1922-1977)

Untitled (Satmar boys in front of 550 Bedford Ave., Brooklyn), 1963-1964

Gelatin silver print, printed 2012

Edition of 15

Print size: 11 x 14 inches

Image size: 8 x 12 ¼ inches

Estate stamp on print verso; title, negative and print dates, edition number and estate signature in pencil on print verso.
(P0951JY)



17. **MORTENSON, Ray** (b. 1944)

Gas Tank (Go Navy) from the Passaic River, 1982

Gelatin silver print, printed c. 1982

Print and image size: 23 ¾ x 30 inches

Mounted; signed, titled and dated in pencil on print and mount versos.

(P2638RM)



18. **MORTENSON, Ray** (b. 1944)

Newark, Amtrak-PATH Bridge, Gas Tank, from the Passaic River, 1982

Gelatin silver print, printed c. 1982

Print and image size: 23 ¾ x 30 inches

Mounted; signed, titled and dated in pencil on print and mount versos.

(P2639RM)



19. **MORTENSON, Ray** (b. 1944)

Amtrak, PATH, NJ Turnpike and Passaic River from International Salt, Harrison, NJ, 1982

Gelatin silver print, printed c. 1982

Print and image size: 23 ¾ x 30 inches

Mounted; signed, titled and dated in pencil on print and mount versos.

(P2640RM)



20. **COHEN, John** (b. 1932)
Jack Kerouac, Lucien Carr, Allen Ginsberg Singing, 1959
Gelatin silver print, printed later
Print size: 8 x 10 inches
Image size: 6 ¼ x 9 1/2 inches
Signed, titled and dated in pencil on print verso.
(P1759JC)



21. **COHEN, John** (b. 1932)
Robert Frank Behind Camera in Kitchen, 1959
Gelatin silver print, printed later
Print size: 10 x 8 inches
Image size: 9 1/8 x 6 1/8 inches
Signed in pencil on print verso.
(P2509JC)



22. **COHEN, John** (b. 1932)
Allen Ginsberg with Beer, Robert Frank with Camera, 1959
Gelatin silver print, printed 1990s
Print size: 8 x 10 inches
Image size: 6 ¼ x 9 1/2 inches
Signed, titled and dated in pencil and photographer's stamp
on print verso.
(P2631JC)



23. **COHEN, John** (b. 1932)
Robert Frank, Manhattan Bridge, 1959
Gelatin silver print, printed 1994
Print size: 10 x 8 inches
Image size: 9 1/2 x 6 1/8 inches
Signed and dated in pencil on print verso.
(P2628JC)



24. **COHEN, John** (b. 1932)
Allen Ginsberg, Gregory Corso with Flute, 1959
Gelatin silver print, printed 2010
Print size: 8 x 10 inches
Image size: 6 3/8 x 9 3/8 inches
Signed, titled and dated in pencil on print verso
(P2629JC)



25. **COHEN, John** (b. 1932)
Allen Ginsberg on Floor, Gesturing to Gregory Corso, 1959
Gelatin silver print, printed 2014
Print size: 14 x 11 inches
Image size: 9 1/2 x 6 1/8 inches
Signed and dated in pencil on print verso.
(P1927JC)



26. **COHEN, John** (b. 1932)
Jack Kerouac, Chinatown 1959
Gelatin silver print, printed later
Print size: 11 x 14 inches
Image size: 8 1/2 x 12 7/8 inches
Signed, titled and dated in pencil on print verso.
(P2444JC)



27. **COHEN, John** (b. 1932)
Peter Orlovsky, Allen Ginsberg, and Gregory Corso – Pull My Daisy, 1959
Gelatin silver print, printed 2001
Print size: 14 x 11 inches
Image size: 11 5/8 x 7 7/8 inches
Signed and dated in pencil on print verso.
(P0823JC)



28. **COHEN, John** (b. 1932)
Gregory Corso, Larry Rivers, Jack Kerouac, David Amram, Allen Ginsberg at a Diner, 1959
Gelatin silver print, printed later
Print size: 11 x 14 inches
Image size: 8 1/2 x 12 7/8 inches
Signed, titled and dated in pencil on print verso.
(P2445JC)



29. **COHEN, John** (b. 1932)
Cast, Pull My Daisy, 1959
Gelatin silver print, printed 2000
Print size: 11 x 14 inches
Image size: 8 3/8 x 13 inches
Signed and dated in pencil on print verso.
(P0755JC)



Cast (l-r): Alice Neel, Larry Rivers, Delphine Seyrig, Allen Ginsberg, Denise Parker, Robert Frank, Sally Gross, Gert Berliner, Richard Bellamy, David Amram, Gregory Corso, Alfred Leslie, Peter Orlovsky (hidden)

30. **COHEN, John** (b. 1932)
Sally Gross, Alice Neel, Richard Bellamy – Pull My Daisy, 1959
Gelatin silver print, printed 1994
Print size: 8 x 10 inches
Image size: 6 1/8 x 9 3/8 inches
Signed, titled and dated in pencil on print verso.
(P2637JC)



31. **COHEN, John** (b. 1932)
Mary Frank in Carriage with Daisy, 1960
Gelatin silver print, printed 2000
Print size: 11 x 14 inches
Image size: 8 5/8 x 12 7/8 inches
Signed, titled and dated in pencil on print verso.
(P2453JC)

