

L. PARKER STEPHENSON
PHOTOGRAPHS

WINDOW DRESSING

May 5 – June 30, 2017

1. **EVANS, Walker** (1903-1975)
Lunchroom Window on the Bowery, People's Restaurant, New York City, 1933-1934
Gelatin silver print, printed c. 1960
Print & image size: 6 x 6 1/16 inches
3 Evans stamps on print verso
(P2960WE)



3. **FRANK, Robert** (b. 1924)
Parade, Hoboken, New Jersey, 1955
Gelatin silver print, printed 1970s
Print size: 11 x 14 inches
Image size: 9 x 13 3/4 inches
Signed, titled and dated in ink on print recto
(P2969RF)



3. **DAVIDSON, Bruce** (b. 1933)
Girl Behind Curtain With TV On, from East 100th Street, 1966-68
Gelatin silver print, printed 1966-68
Print size: 13 7/8 x 11 inches
Image size: 8 7/8 x 7 inches
Signed in pencil on print verso; Magnum Photo Library stamp and Bruce Davidson/Magnum Photos Copyright stamp on print verso
(P2965BD)



4. **FRIEDLANDER, Lee** (b. 1934)
Hillcrest, New York, 1970
Gelatin silver print, printed 1970s
Print size: 11 x 13 7/8 inches
Image size: 7 3/8 x 11 inches
Signed and titled in pencil on print verso
(P2973LF)



5. **STRAND, Paul** (1890-1976)
Charcuterie, Montmerle-sur-Saone, the Ain Region, France, 1950
Gelatin silver print, printed c. 1950
Print size: 7 7/8 x 7 7/8 inches
Image size: 7 5/8 x 9 5/8 inches
Mounted; signed, titled, and dated on behalf of Paul Strand by Hazel Strand in pencil on print verso (P2968PS)



6. **SUDEK, Josef** (1896-1976)
From the series "View of My Studio", c. 1944-1953
Gelatin silver print, printed c. 1944-1953
Print and image size: 11 x 8 5/8 inches
Signed in pencil on print verso (P2975JS)



7. **FRANK, Robert** (b. 1924)
View from Hotel Room, Butte, Montana, 1955
Gelatin silver print, printed early 70s
Print size: 11 x 14 inches
Image size: 8 7/8 x 13 1/2 inches
Signed, titled and dated in ink on print recto; stamped with RF Archive and Copyright stamps – signed and dated 1979 in brown ink on print verso (P2970RF)



8. **LEVINSTEIN, Leon** (1910-1988)
East Harlem, 1953
Gelatin silver print, printed early
Mount and image size: 13 1/2 x 10 1/2 inches
Mounted, label with title and date in ink; label with signature in ink; estate stamp on mount verso (P2967LL)



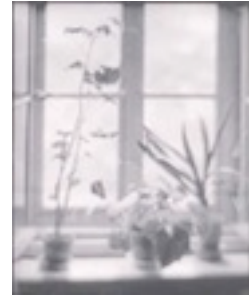
9. **ENGEL, Morris** (1918-2005)
Rebecca, Harlem, 1947
Gelatin silver print, printed c. 1947
Print size: 10 7/8 x 13 7/8 inches
Image size: 10 1/2 x 13 3/8 inches
Signed in pencil on print verso (P2972ME)



10. **YOORS, Jan** (1922-1977)
Ruthy-Ann, Harlem, 1962
Gelatin silver print, printed 2012
Ed. 1/15
Print size: 11 x 14 inches
Image size: 8 x 12 ¼ inches
Estate stamp with: estate signature, title, negative,
print, and copyright dates; and edition number in pencil
on verso
(P1143SS)



11. **STRUSS, Karl** (1886=1981)
Potted Plants on a Windowsill, 1909
Platinum print, printed c. 1909
Mount size: 4 7/8 x 4 1/8 inches
Image size: 4 ½ x 3 ¾ inches
Signed in pencil on print recto
(P2974KS)



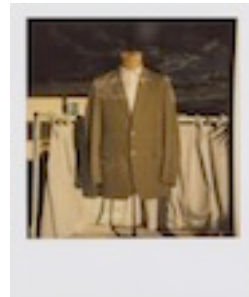
12. **SUDA, Issei** (b. 1948)
Japanese Kitchen Knife Shop Window, unknown
Gelatin silver print, printed 1980s, before 1986
Print size: 14 x 11 inches
Image size: 8 7/8 x 8 ¾ inches
Signed (in Japanese) in pencil on print verso
(P2598IS)



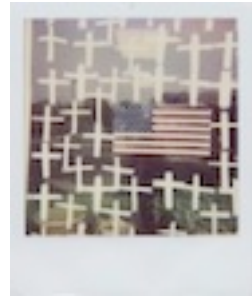
13. **SHELL, Sherril** (1877-1964)
Reflections in New York Shop Window, c. 1930
Gelatin silver print, printed c. 1930
Print and image size: 11 ¾ x 9 ¼ inches
"Reflections in New York Shop Window by Sherril Shell
[sic]" written in pencil on print verso
(P1143SS)



14. **HAMMOND, Scott** (b. 1981)
Columbus, OH., 2005
Polaroid 600 series, printed 2005
Print size: 4 ¼ x 3 ½ inches
Image size: 3 1/8 x 3 inches
Signed, titled, and dated in marker on print verso
(P22139HD)



15. **HAMMOND, Scott** (b. 1981)
Col. OH., 2003
Polaroid 600 series, printed 2003
Print size: 4 ¼ x 3 ½ inches
Image size: 3 1/8 x 3 inches
Signed, titled, and dated in marker on print verso
(P2233HD)



16. **DOISNEAU, Robert** (1912-1994)
La Dame Indigee, 1948
Gelatin silver print, printed 1956
Print size: 9 ¼ x 7 inches
Image size: 7 7/8 x 6 1/2 inches
Ink Stamp from United Press Association on print verso
(P2961RD)



17. **BRANDT, Bill** (1904-1983)
Maid at Window, Mayfair, 1936
Gelatin silver print, printed 1950s
Print and image size: 9 x 7 3/4 inches
Photographer's stamp on print verso
(P2973BB)



18. **ALVAREZ BRAVO, Manuel** (1902-2002)
Los Agochados (The Crouched Ones), 1934
Gelatin silver print, printed 1980
Ed. 7/75
Mount/print size: 14 ¾ x 19 5/8 inches
Image size: 7 ¼ x 9 1/2 inches
Mounted, signed and editioned in pencil on mount recto
(P2959MAB)



19. **KLEIN, William** (b. 1928)
Hamburger 40c, New York, 1955
Gelatin silver print, printed later
Print size: 11 7/8 x 15 3/4 inches
Image size: 9 5/8 x 14 3/8 inches
Signed, titled, and dated in pencil on print verso
(P2966WK)



20. **KONTTINEN, Sirkka-Liisa** (b. 1948)
Making-up in Mason Street, Byker, 1971
Gelatin silver print, printed 2012
Print size: 16 x 20 inches
Image size: 10 3/8 x 15 3/8 inches
Signed, titled, and dated in pencil on print verso
(P1282SLK)

