

L. PARKER STEPHENSON
PHOTOGRAPHS

WINDOW DRESSING CONTINUED...

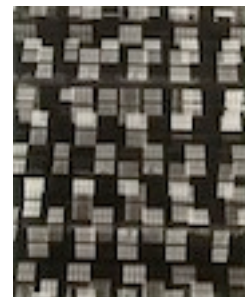
July 12 – August 18, 2017

1. **FAURER, Louis** (1916-2001)
Robert and Mary Frank , San Gennaro Festival, New York, NY, 1950
Gelatin silver print, printed 1990 by Chuck Kelton
AP 8/8 from an edition of 18
Print size: 14 x 11 inches
Image size: 9 ¾ x 6 3/8 inches
Signed, titled, dated and editioned in pencil on print verso
(P3016LF)

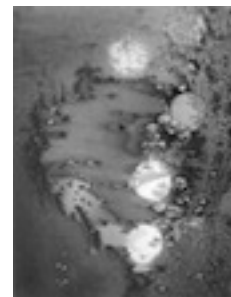
3. **FAURER, Louis** (1916-2001)
Accident, New York, c. 1949-1953
Gelatin silver print, printed 1990 by Sid Kaplan
AP 3/6 from an edition of 20
Print size: 11 x 14 inches
Image size: 8 5/8 x 13 inches
Signed, titled, dated and editioned in pencil on print verso
(P3017LF)

3. **DAVIDSON, Bruce** (b. 1933)
Girl Behind Curtain With TV On, from East 100th Street, 1966-68
Gelatin silver print, printed 1966-68
Print size: 13 7/8 x 11 inches
Image size: 8 7/8 x 7 inches
Signed in pencil on print verso; Magnum Photo Library stamp and Bruce Davidson/Magnum Photos Copyright stamp on print verso
(P2965BD)

4. **CALLAHAN, Harry** (b. 1921?)
Chicago, c. 1948
Gelatin silver print, printed later
Print size: 10 x 8 inches
Image size: 9 5/8 x 7 5/8 inches
Signed in pencil on print recto
(P3022HC)



5. **WHITE, Minor** (1908-1976)
Beginnings, Frosted Window, Rochester, NY, 1962
Gelatin silver print, printed 1962
Mount size: 19 x 15 1/2 inches
Image size: 12 1/4 x 9 1/2 inches
Signed and dated in pencil on mount recto
(P3001MW)



6. **FRIEDLANDER, Lee** (b. 1934)
Self Portrait, Washington, D.C., 1962
Gelatin silver print, printed 1978
Print size: 11 x 14 inches
Image size: 7 1/4 x 11 inches
Signed, dated, titled and stamped on print verso
(P3002LF)



7. **COHEN, John** (b. 1932)
Tanager Gallery, 10th Street, Lois Dodd Standing, 1959
Gelatin silver print, printed early
Print size: 14 x 11 inches
Image size: 13 1/2 x 9 inches
Signed and titled in pencil on print verso
(P2739JC)



8. **BOURKE-WHITE, Margaret** (1904-1971)
Public Square, Terminal Tower, Cleveland, 1928
Platinum or related metal print, printed 1998
Ed. 22/100
Paper size: 12 7/8 x 9 7/8 inches
Image size: 12 7/8 x 9 7/8
Estate blind stamp and edition numbers on print recto;
LIFE Gallery of Photography stamps on print verso
(P3000MB)



9. **DOISNEAU, Robert** (1912-1994)
La Dame Indigee, 1948
Gelatin silver print, printed 1956
Print size: 9 1/4 x 7 inches
Image size: 7 7/8 x 6 1/2 inches
Ink Stamp from United Press Association on print verso
(P2961RD)



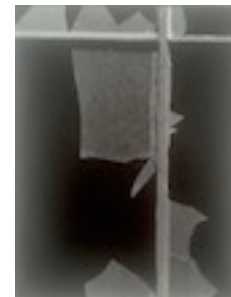
10. **BRANDT, Bill** (1904-1983)
Maid at Window, Mayfair, 1936
Gelatin silver print, printed 1950s
Print and image size: 9 x 7 3/4 inches
Photographer's stamp on print verso
(P2973BB)



11. **ALVAREZ BRAVO, Manuel** (1902-2002)
Los Agochados (The Crouched Ones), 1934
Gelatin silver print, printed 1980
Ed. 7/75
Mount/print size: 14 3/4 x 19 5/8 inches
Image size: 7 1/4 x 9 1/2 inches
Mounted, signed and editioned in pencil on mount recto
(P2959MAB)



12. **SISKIND, Aaron** (1903-1991)
New York 1, Window, 1947
Gelatin silver print, printed 1981
Print size: 14 x 11 inches
Image size: 12 7/8 x 10 inches
Signed, titled and dated in pencil on print verso
(P3023AS)



13. **MORTENSON, Ray** (b, 1944)
South Bronx 9-30-84, 1984
Gelatin silver print, printed c.1984
Print size: 12 1/2 x 9 1/2 inches
Image size: 9 1/8 x 6 inches
Signed and dated in pencil on print verso
(P2915RM)



14. **LYONS, Nathan** (1930-2016)
Untitled (Notations in Passing), 1962-1974
Platinum print, printed 1962-1974
Print size: 7 x 4 7/8 inches
Image size: 6 3/8 x 4 1/4 inches
Signed in pencil on print recto
(P3021NL)



15. **KONTTINEN, Sirkka-Liisa** (b. 1948)
Lost Children, Hoppings, 1971
Gelatin silver print, printed 2012
Print size: 16 x 20 inches
Image size: 10 1/4 x 15 3/8 inches
Signed, titled, and dated in pencil on print verso
(P2010SLK)



16. **SUDA, Issei** (b. 1948)
Photo Studio, 1970s
Gelatin silver print, printed 1970s
Print size: 14 x 11 inches
Image size: 8 1/2 x 8 1/2 inches
Signed (in Japanese) in pencil on print verso
(P1887IS)



17. **YOORS, Jan** (1922-1977)
Ruthy-Ann, Harlem, 1962
Gelatin silver print, printed 2012
Ed. 1/15
Print size: 11 x 14 inches
Image size: 8 x 12 1/4 inches
Estate stamp with: estate signature, title, negative,
print, and copyright dates; and edition number in pencil
on verso
(P0967JY)



18. **SCHELL, Sherril** (1877-1964)
Reflections in New York Shop Window, c. 1930
Gelatin silver print, printed c. 1930
Print and image size: 11 3/4 x 9 1/4 inches
"Reflections in New York Shop Window by Sherril Shell
[sic]" written in pencil on print verso
(P1143SS)

