

L. PARKER STEPHENSON
PHOTOGRAPHS

AIPAD 2018

April 4 -8th, 2018

1. **BURKE, Bill** (b. 1943)
Coal Mine, Morgan County, Kentucky, 1974
Gelatin silver print, printed c. 1979-1980
Image and print size: 14 ½ x 18 7/8 inches
Titled and dated in ink on print recto; signed and dated
in pencil; "Good Art" and "Actual Signature" stamps on
print verso
(P4069BB)



2. **COHEN, John** (b. 1932)
Two Miners Having Tea During Break at Mine Office,
Littlebourne Kent, 1955
Vintage gelatin silver print
Mount and image: 9 ¼ x 13 1/2 inches
Signed and dated in pencil on mount verso
(P4048JC)



3. **DAVIES, John** (b. 1949)
Reddish Vale, Stockport, 1988
Gelatin silver print, printed 2006
Ed. 2/3
Paper size: 30 5/8 x 41 ¾ inches
Image size: 28 x 40 ½ inches
Signed, titled, dated with print date and editioned in
pencil on recto
(P3067JD)



4. **DAVIES, John** (b. 1949)
Ladbroke Grove, London, 1985
Gelatin silver print, printed later
Ed. 3/12
Paper size: 20 x 24 inches
Image size: 15 x 22 1/2 inches
Signed, titled, and editioned in pencil on print recto
(P4072JD)



5. **DAVIES, John** (b. 1949)
Stalybridge, Cheshire, 1983
Vintage gelatin silver print
Ed. 4/12
Paper size: 20 x 24 inches
Image size: 15 x 22 1/4 inches
Signed, titled, and editioned in pencil on print recto
(P4073JD)



6. **DAVIES, John** (b. 1949)
Westgate, Newcastle-upon-Tyne, 2001
Vintage gelatin silver print
Ed. 4/12
Paper size: 20 x 24 inches
Image size: 17 x 22 7/8 inches
Signed, titled, and editioned in pencil on print recto;
signed in pencil on print verso
(P3076JD)



7. **DAVIES, John** (b. 1949)
Runcorn Bridges, Cheshire, 1986
Gelatin silver print, printed later
Ed. 7/12
Paper size: 20 x 24 inches
Image size: 15 3/4 x 22 3/4 inches
Signed, titled, and editioned in pencil on print recto;
signed in pencil on print verso
(P4071JD)



8. **EVANS, Walker** (1903-1975)
Coal Dock Workers, Havana, 1933
Gelatin silver print, printed 1974
Ed. 67/75
Mount size: 19 3/4 x 14 3/4 inches
Image size: 11 3/4 x 9 inches
Signed and editioned in pencil on print recto
(P4067WE)



9. **KILLIP, Chris Killip** (b. 1946)
Rocker and Rosie Going Home, Seacoal Beach,
Lynemouth, Northumberland, 1984
Gelatin silver print, printed 2010
Paper size: 20 x 24 inches
Image size: 15 x 18 3/8 inches
Signed, titled, and dated with print dates in pencil on
print verso
(P0900CK)



10. **KONTTINEN, Sirkka-Liisa** (b. 1948)
Hawthorn Hive, Morning 8 August, 2000
Archival pigment print
Ed. 1/15
Paper size: 16 x 20 inches
Image size: 11 7/8 x 15 1/4 inches
Signed, titled, dated and editioned in pencil on print
verso
(P4061SLK)



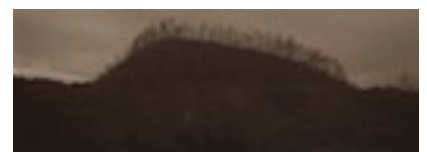
11. **KONTTINEN, Sirkka-Liisa** (b. 1948)
Hawthorn Hive, Afternoon 2 December, 1999
Archival pigment print
Ed. 3/15
Paper size: 16 x 20 inches
Image size: 11 7/8 x 15 1/4 inches
Signed, titled, dated and editioned in pencil on print
verso
(P4060SLK)



12. **WORMS, Witho** (b. 1959)
Freyning-Merlebach, France, 2006-2011
Carbon print made with coal from site
Ed. 3/5
Paper size: 7 1/2 x 22 5/8 inches
Image size: 5 1/2 x 19 1/8 inches
Signed, titled, dated and editioned in pencil on print
verso
(P3083WW)



13. **WORMS, Witho** (b. 1959)
Rybnik, Poland, 2006-2011
Carbon print made with coal from site
Ed. 3/5
Paper size: 9 x 22 7/8 inches
Image size: 7 1/8 x 19 1/8 inches
Signed, titled, and editioned in pencil on print verso
(P3079WW)



14. **WORMS, Witho** (b. 1959)
Gilly, Belgium, 2006-2011
Carbon print made with coal from site
Ed. 5/5
Paper size: 10 3/8 x 20 7/8 inches
Image size: 7 7/8 x 18 1/4 inches
Signed, titled and editioned in pencil on verso
(P3080WW)



15. **WORMS, Witho** (b. 1959)
Merthyr Tydfil, Wales, 2006-2011
Carbon print made with coal from site
Ed/ 3/5
Paper size: 9 x 21 3/8 inches
Image size: 7 1/8 x 18 3/4 inches
Signed, titled and editioned in pencil on print verso
(P3081WW)



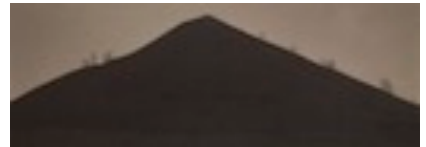
16. **WORMS, Witho** (b. 1959)
Marcinelle, Belgium, 2006-2011
Carbon print made with coal from site
Ed. 4/5
Paper size: 9 7/8 x 22 7/8 inches
Image size: 7 1/8 x 19 1/8 inches
Signed, titled and editioned in pencil on verso
(P3086WW)



17. **WORMS, Witho** (b. 1959)
Loos-en-Gohelle, France, 2006-2011
Carbon print made with coal from site
Ed. 5/5
Paper size: 10 7/8 x 23 inches
Image size: 7 1/8 x 19 1/8 inches
Signed, titled and editioned in pencil on print verso
(P3078WW)



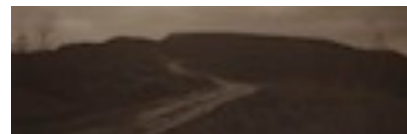
18. **WORMS, Witho** (b. 1959)
Dourges 1, France, 2006-2011
Carbon print made with coal from site
Ed. 5/5
Paper size: 10 1/2 x 21 3/8 inches
Image size: 7 1/2 x 19 1/8 inches
Signed, titled, and editioned in pencil on print verso
(P3085WW)



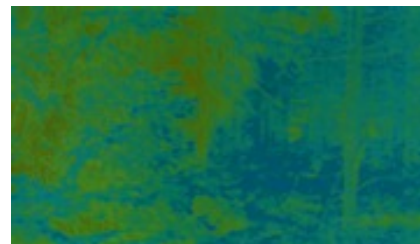
19. **WORMS, Witho** (b. 1959)
Tylorstown, Wales, 2006-2011
Carbon print made with coal from site
Ed. 3/5
Paper size: 8 ¼ x 21 1/4 inches
Image size: 6 3/8 x 19 1/8 inches
Signed, titled and editioned in pencil on verso
(P3084WW)



20. **WORMS, Witho** (b. 1959)
Rydultowy (Anna), Poland, 2006-2011
Carbon print made with coal from site
Ed. 4/5
Paper size: 8 ½ x 22 5/8 inches
Image size: 6 ¼ x 19 1/4 inches
Signed, titled and editioned in pencil on print verso
(P3082WW)



21. **WORMS, Witho** (b. 1959)
Sweden 065 YBB, 2013-2016
Unique three layer carbon print
Print size: 13 ¾ x 21 1/2 inches
Image size: 11 1/8 x 19 inches
Signed, titled and dated in pencil on print verso.
(P4028WW)



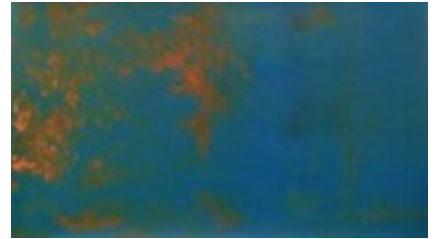
21. **WORMS, Witho** (b. 1959)
France 103 BRB, 2013-2016
Unique three layer carbon print
Print size: 13 ¾ x 21 1/2 inches
Image size: 11 1/8 x 19 inches
Signed, titled and dated in pencil on print verso.
(P3045WW)



23. **WORMS, Witho** (b. 1959)
Finland 021 WBB, 2013-2016
Unique three layer carbon print
Print size: 13 1/2 x 21 1/2 inches
Image size: 11 1/8 x 18 7/8 inches
Signed, titled and dated in pencil on print verso.
(P4022WW)



24. **WORMS, Witho** (b. 1959)
Sweden 065 RYB, 2013-2016
Unique three layer carbon print
Print size: 13 $\frac{3}{4}$ x 21 $\frac{1}{2}$ inches
Image size: 11 $\frac{1}{8}$ x 19 inches
Signed, titled and dated in pencil on print verso.
(P4029WW)



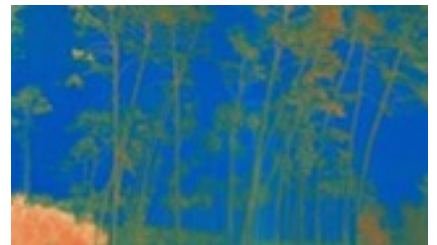
25. **WORMS, Witho** (b. 1959)
Sweden 054 BYB, 2013-2016
Unique three layer carbon print
Print size: 13 $\frac{3}{4}$ x 21 $\frac{1}{2}$ inches
Image size: 11 $\frac{1}{8}$ x 19 $\frac{1}{4}$ inches
Signed, titled and dated in pencil on print verso.
(P3042WW)



26. **WORMS, Witho** (b. 1959)
Belgium 213 RBY, 2013-2016
Unique three layer carbon print
Print size: 13 $\frac{3}{4}$ x 21 $\frac{1}{2}$ inches
Image size: 11 $\frac{1}{8}$ x 19 $\frac{1}{4}$ inches
Signed, titled and dated in pencil on print verso.
(P3043WW)



27. **WORMS, Witho** (b. 1959)
France 134 YRB, 2013-2016
Unique three layer carbon print
Print size: 13 $\frac{3}{4}$ x 21 $\frac{1}{2}$ inches
Image size: 11 $\frac{1}{8}$ x 19 inches
Signed, titled and dated in pencil on print verso.
(P4027WW)



28. **WORMS, Witho** (b. 1959)
Finland 034 BWB, 2013
Unique three layer carbon print
Print size: 13 $\frac{3}{4}$ x 21 $\frac{1}{2}$ inches
Image size: 11 $\frac{1}{8}$ x 19 inches
Signed, titled and dated in pencil on print verso.
(P3040WW)



29. **WORMS, Witho** (b. 1959)
Sweden 065 YBY, 2013
Unique three layer carbon print
Print size: 13 ³/₄ x 21 ¹/₂ inches
Image size: 11 ¹/₈ x 19 inches
Signed, titled and dated in pencil on print verso.
(P3044WW)



30. **WORMS, Witho** (b. 1959)
Belgium 202 YRB, 2013
Unique three layer carbon print
Print size: 13 ¹/₂ x 21 ¹/₂ inches
Image size: 11 ¹/₈ x 19 ¹/₈ inches
Signed, titled and dated in pencil on print verso.
(P4020WW)



31. **WORMS, Witho** (b. 1959)
Belgium 213 RRY, 2013-2016
Unique three layer carbon print
Print size: 13 ¹/₂ x 21 ¹/₂ inches
Image size: 11 x 19 ¹/₈ inches
Signed, titled and dated in pencil on print verso.
(P4026WW)



32. **WORMS, Witho** (b. 1959)
Belgium 213 YBR - A, 2013-2016
Unique three layer carbon print
Print size: 13 ¹/₂ x 21 ¹/₂ inches
Image size: 11 x 19 ¹/₈ inches
Signed, titled and dated in pencil on print verso.
(P4026WW)

